

PRESIDIUM[®]

Refractive Index Meter II

Tutorial

Contents

	Page
1. Installing PRIM Software	3
2. Using PRIM Software	7

Stage 1: Installing PRIM Software

1. Insert the Presidium PRIM Software CD into your CD ROM drive. Installation will start automatically.

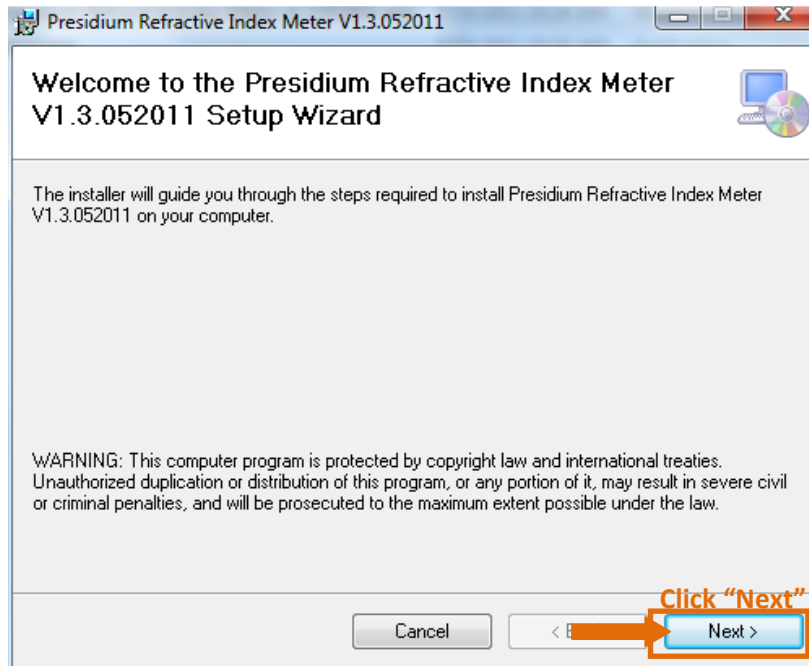


Figure 1.1

2. Figure 1.1 shows the setup wizard dialog box appears when CD auto runs.
3. Click "Next" as shown on the dialog box. It will go to the next dialog box
4. Figure 1.2 shows the dialog box for License Agreement. Please read the agreement and to move to the next dialogue box, click "I Agree" to proceed to next step.

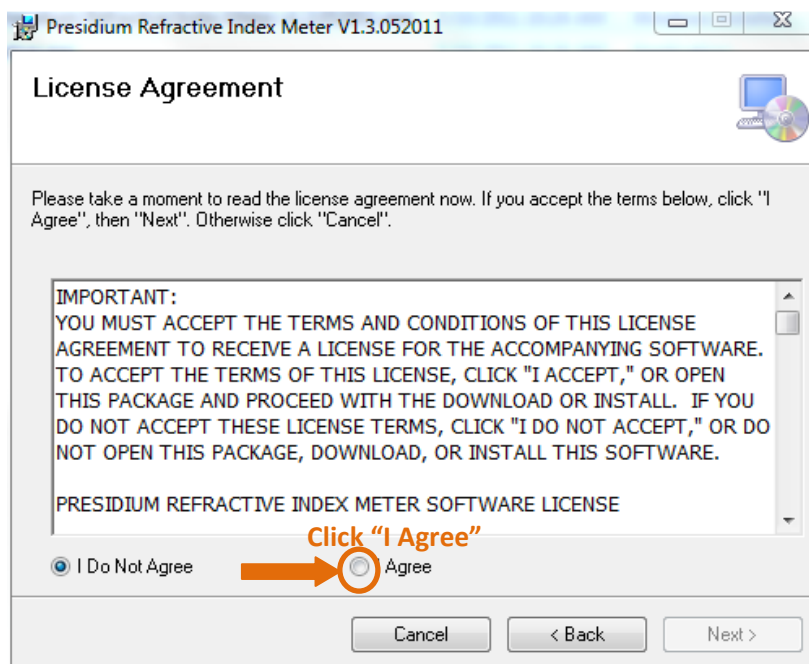


Figure 1.2

5. Click "Next" once complete step 4. See Figure 1.3 below.

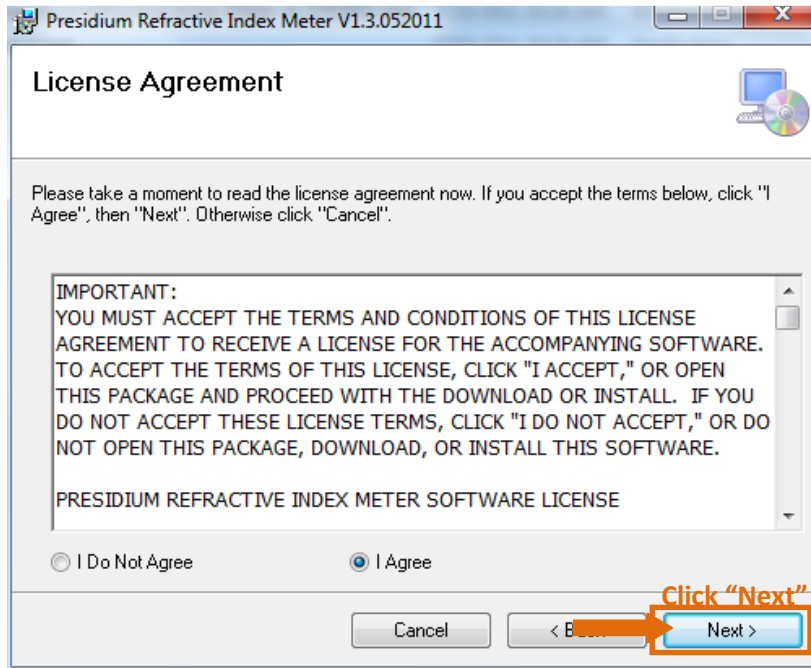


Figure 1.3

6. Next dialogue box below shows the folder location of the software installed. To select different folder, see Figure 1.4. Once completed this section, click "Next" .

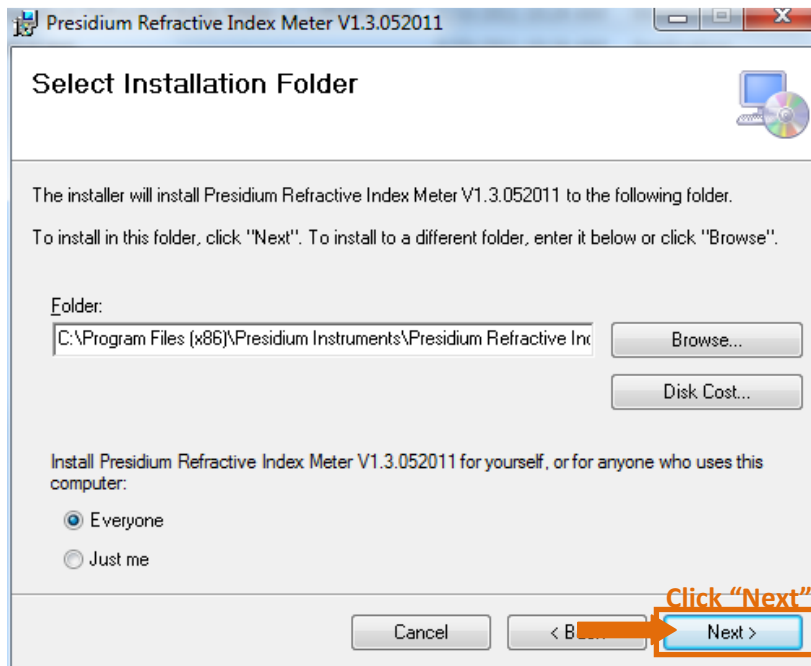


Figure 1.4

7. Figure 1.5 shows Dialogue box of software is ready to install. Click “Next” to proceed

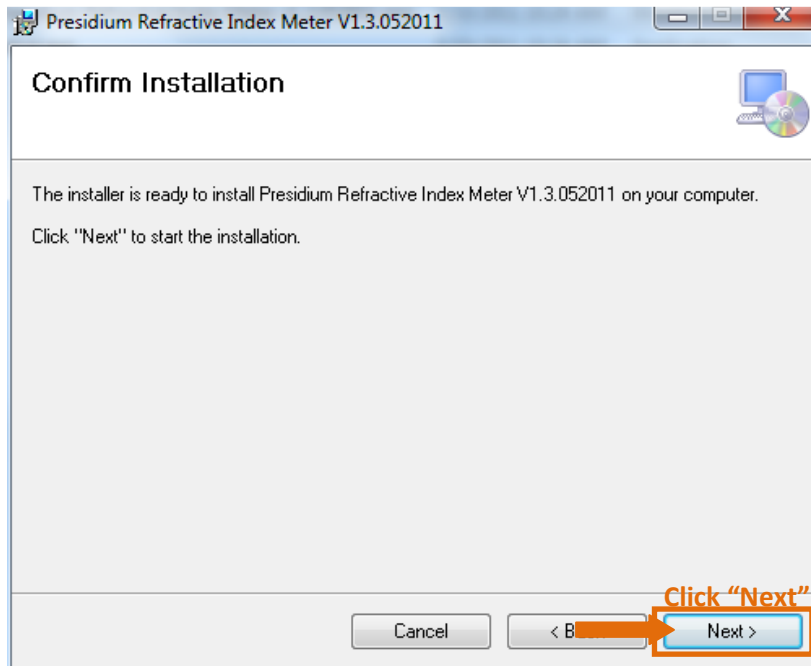


Figure 1.5

8. Figure 1.6 shows installing software. Click “Next” **ONLY** when the installation is 100% completed.

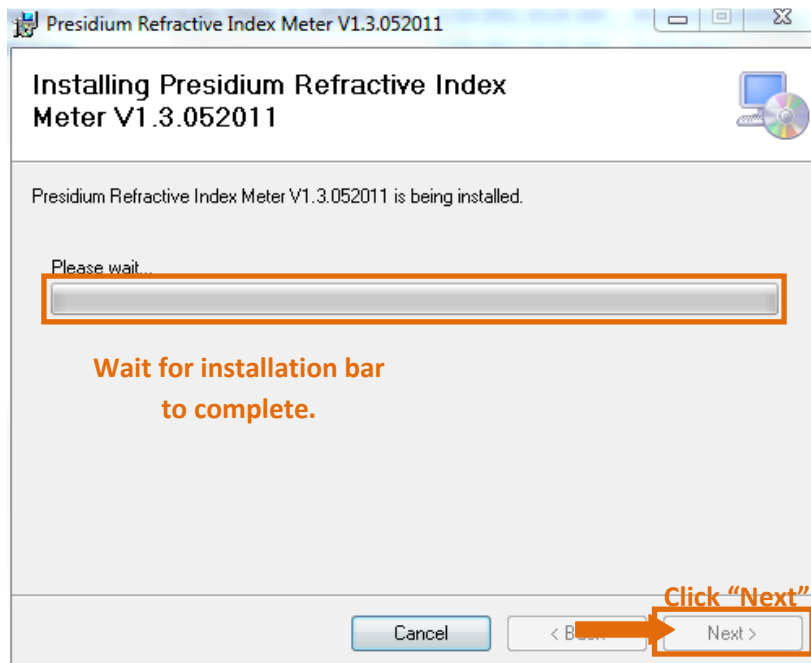


Figure 1.6

9. Once installation is successfully installed, click "Close" to exit. Figure 1.6 shows the Dialogue box

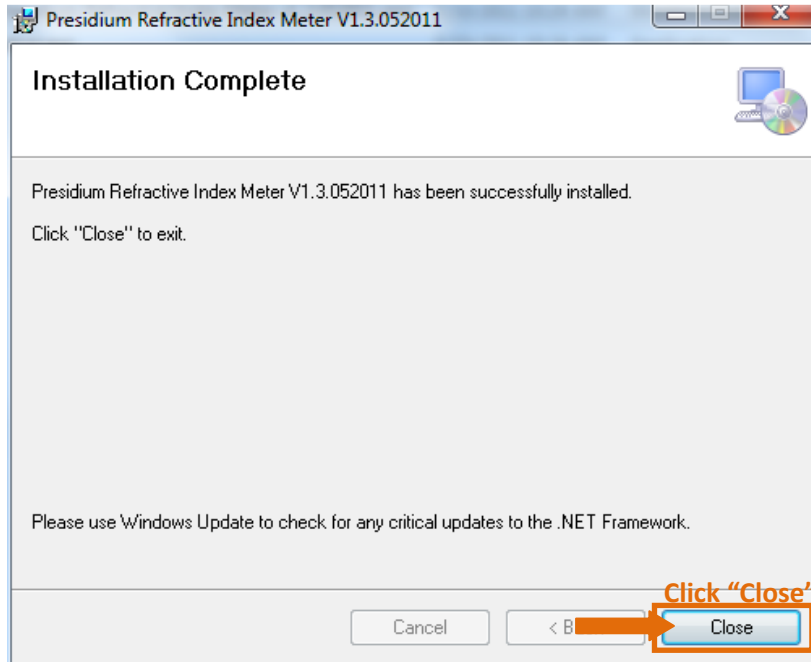


Figure 1.6

10. The PC Interface start up icon in Figure 1.7 will shown on the desktop upon successful software installation. Double click the start up icon to view the interface page.



Figure 1.7

Stage 2: Using PRIM Software

1. Click "Connect" once you have connected the USB cable to the PRIM Unit and PC.

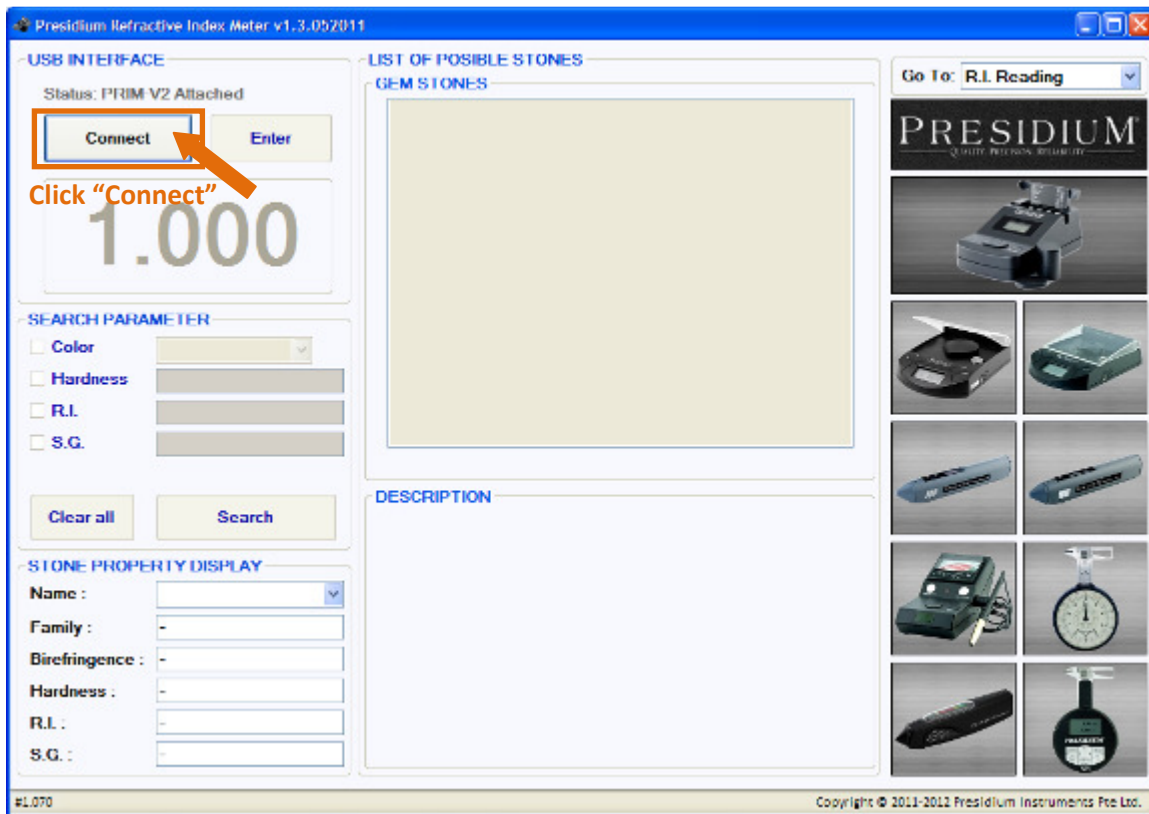


Figure 1.8

2. Place the gemstone to be tested on the PRIM unit as shown on Figure 1.9 below.



Figure 1.9

- Cover it with the cylinder container as shown in Figure 2.0.



Figure 2.0

From Figure 2.1

- Press “Enter” to show the actual reading on the interface. The RI value shown eg, “1.602”
- In the LIST OF POSSIBLE STONES, there will be gemstones shown according to the ranges of refractive index. The DESCRIPTION and the STONE PROPERTY will provide more information about the particular gemstone selected or highlighted as follows.

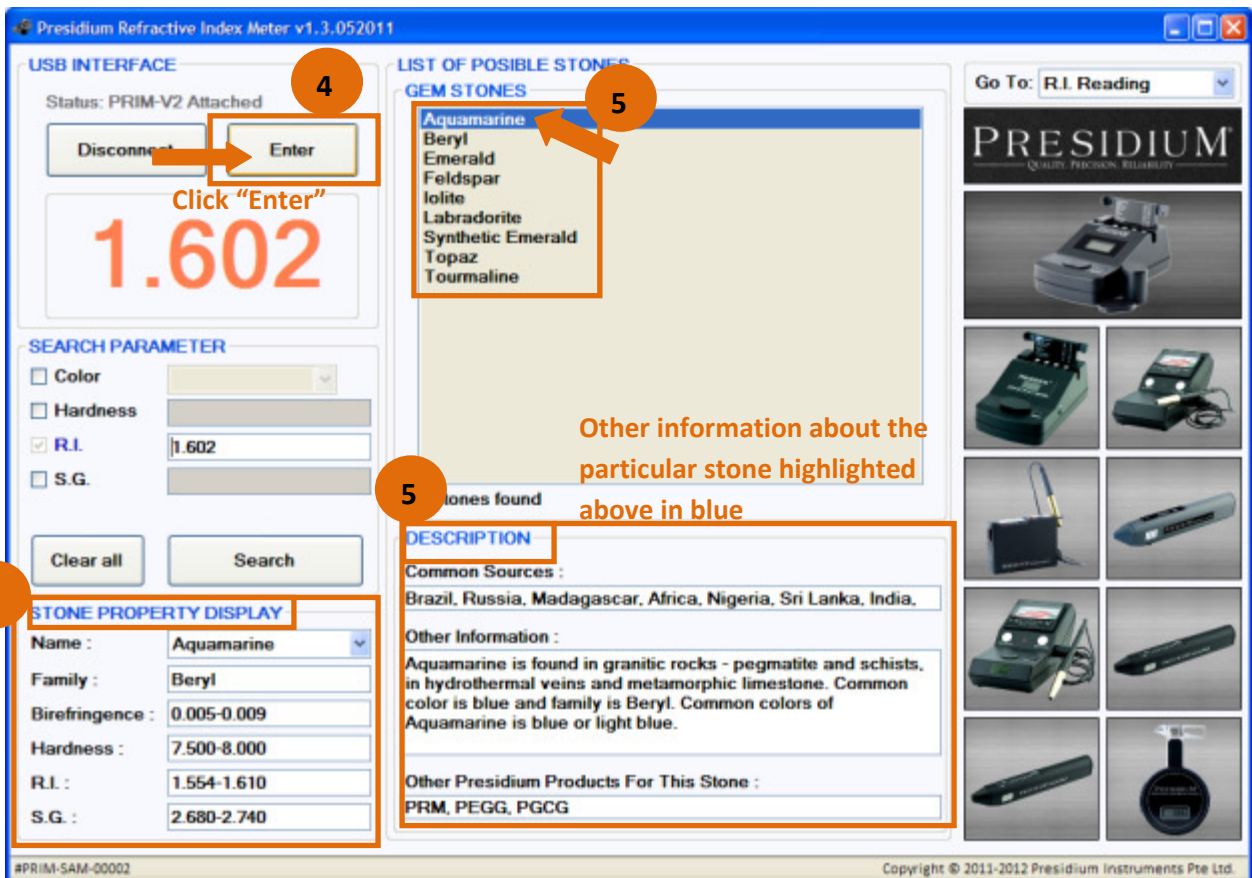


Figure 2.1

6. The SEARCH PARAMETER allows further zoom into the specific stone, See Figure 2.2

The screenshot displays the 'Presidium Refractive Index Meter v1.3.052011' software interface. The main display shows a large orange '1.649' reading. The 'USB INTERFACE' section indicates 'Status: PRIM-V2 Attached' with 'Disconnect' and 'Enter' buttons. The 'SEARCH PARAMETER' section, highlighted with an orange box and a circled '6', includes checkboxes for 'Color' (checked, set to 'Yellow'), 'Hardness', 'R.I.' (checked, set to '1.649'), and 'S.G.'. Below this are 'Clear all' and 'Search' buttons. The 'LIST OF POSSIBLE STONES' section shows 'Peridot' and 'Tourmaline' in a list, with 'Peridot' selected and highlighted in blue. An orange arrow points to 'Peridot'. A text overlay reads: 'Tick color, hardness, R.I. or S.G any combination to further zoom in'. The 'DESCRIPTION' section for Peridot lists common sources (Hawaii, Zeberged (Egypt), Isle of St. John, Myanmar, Pakistan) and other information: 'Peridot is found in peridotites, in concentrations in basalt and ultrabasic rocks. Common colors are yellow, green and brown.' Other Presidium products for this stone are listed as 'PEGG.PGCG.PRM'. The bottom status bar shows '#PRIM-SAM-00002' and 'Copyright © 2011-2012 Presidium Instruments Pte Ltd.'.

Figure 2.2

7. See Figure 2.3 will allow checking Dictionary in the Gemstone Database and Contact us for more enquiries.

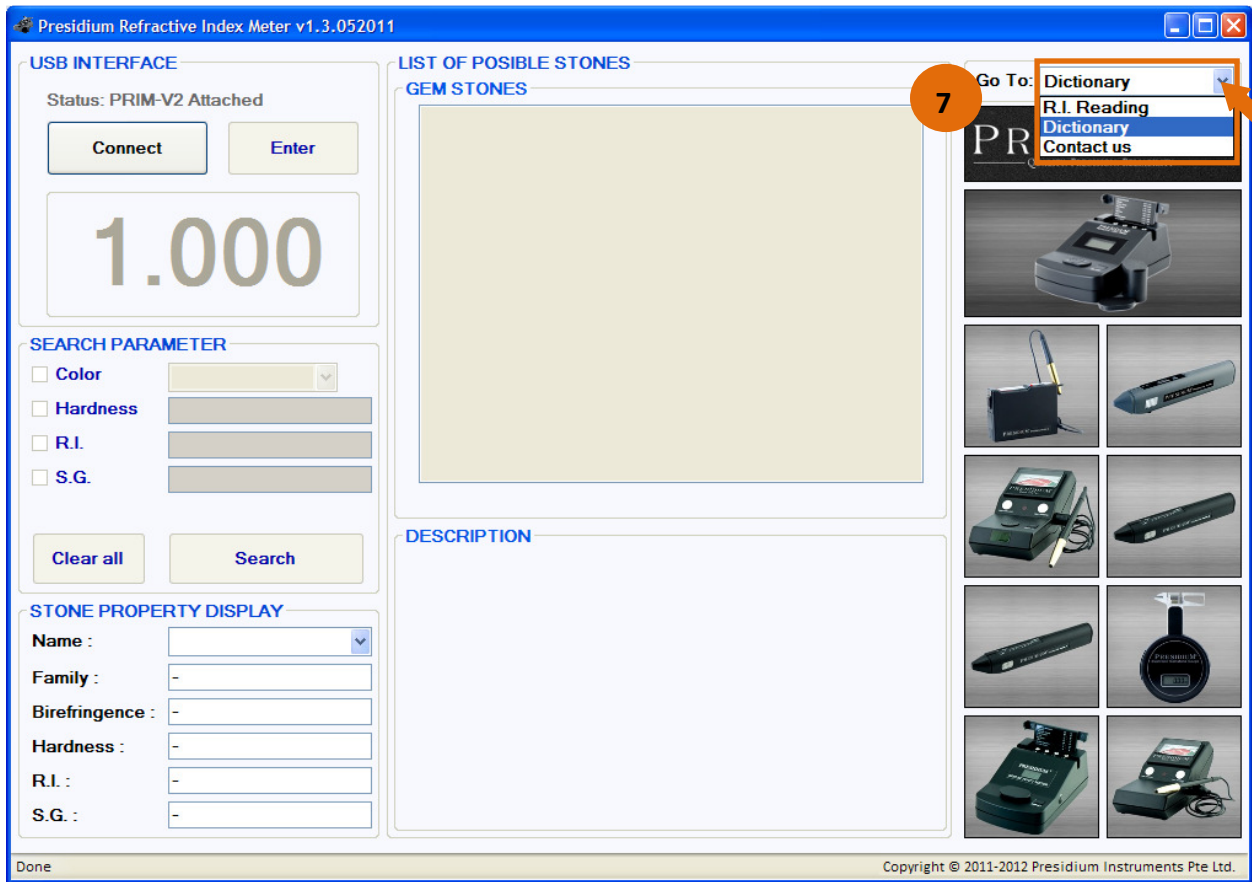


Figure 2.3