

# PRESIDIUM®

Inside Ring Engraving Machine - Mini | mPIREM

USER HANDBOOK

# Contents

(English Version)

---

I. Disclaimers, Exclusions and Limitations of Liability	pg. 03
II. About this book	pg. 04
III. About your Presidium Inside Ring Engraving Machine - Mini	pg. 05
IV. IMPORTANT NOTICE	pg. 07
1. GETTING STARTED with your Presidium Inside Ring Engraving Machine - Mini	pg. 08
2. USING your Presidium Inside Ring Engraving Machine - Mini	pg. 10
3. TAKING CARE of your Presidium Inside Ring Engraving Machine - Mini	pg. 11

## I. Disclaimers, Exclusions and Limitations of Liability

---

PLEASE READ AND NOTE PRESIDIUM WARRANTY TERMS AND CONDITIONS as stated in the warranty card. Presidium warranty for its testers are subject to proper use by its users in accordance with all the terms and conditions as stated in the relevant user handbook and shall cover only manufacturing defects.

Due to continuous product improvement, Presidium reserves the right to revise all documents including the right to make changes to the handbook without notice and without obligation to notify any person of such revisions or changes. Users are advised to check Presidium's website from time to time <http://www.presidium.com.sg/>

Presidium shall not be responsible for any damage or loss resulting from the use of this tester or handbook.

Under no circumstances shall Presidium, its manufacturer or any of its subsidiaries, licensors, distributors, reseller, servant and/or agent be liable for any direct or indirect damages, resulting from the use of this tester.

**TO THE MAXIMUM EXTENT PERMITTED BY APPLICABLE LAW, under no circumstances shall Presidium, its manufacturer or any of its subsidiaries, licensors, distributors, reseller, servant and/or agent be responsible for any special, incidental, consequential or indirect damages howsoever caused.**

The engraver or Presidium Inside Ring Engraving Machine (PIREM) referred to in this handbook is provided and/or sold on an "as is" basis. Except as required by applicable law, no warranties of any kind, either expressed or implied, including, but not limited to, the implied warranties of merchantability and fitness for a particular purpose.

## II. About this Book

---

Thank you for purchasing the Presidium Inside Ring Engraving Machine (“PIREM” or “engraver”).

This handbook is designed to help you set up your engraver and describes all you need to know about how to use your engraver accurately and take care of it in line with its requirements. Please read these instructions carefully and keep them handy for future reference.

This book also contains the terms and conditions in relation to the use of the tester including the **Disclaimer, EXCLUSION and Limitation of Liability clauses stated above in Section I.**

### III. About your Presidium Inside Ring Engraving Machine - Mini

The Presidium Inside Ring Engraving Machine - Mini is a new and improved, even more compact and sturdy engraving machine, that provides ease of customization by engraving lettering on inside ring surfaces.

#### **Presidium Inside Ring Engraving Machine - Mini features the following:**

- Wide ring-holding capacity of ring sizes from diameter Ø13-26mm
- Adjustable letter spacing
- Hardened powder-coated paintwork
- Compact size

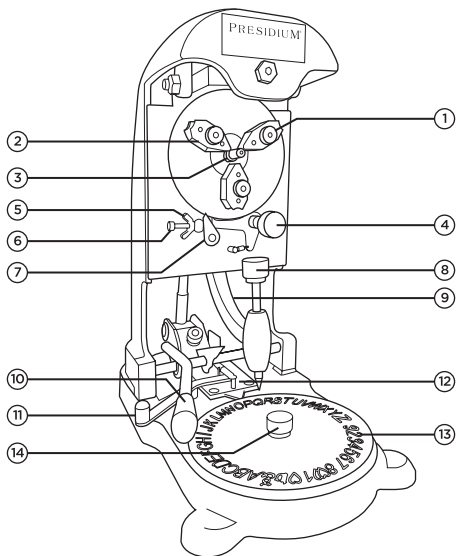
Note: Rings of width 2mm and less are not recommended for engraving.

#### **Product specifications:**

Description	Presidium Inside Ring Engraving Machine - Mini (mPIREM)
Ring Holding Capacity	Ring size from approximately 13-26mm
Template	Engraving Dial (2-sided) - Side-1 produces 1mm letters - Side-2 produces 2mm letters
Letter-spacing (Pitch)	3-6 teeth movement (2-3mm)
Net Weight	5.5 kg
Gross Weight	6.5 kg
Unit Dimensions	290mm L x 152mm W x 316mm H
Packaging Dimensions	320mm L x 280mm W x 360mm H

#### **Included in your package:**

- One (1) piece Dust Cover
- One (1) piece Engraving Dial (2-sided)
- Five (5) pieces Sample Rings
- User Handbook
- Warranty Card



1	PIREM 1	Lock Nut
2	PIREM 2	Self-centering Jaw
3	PIREM 3	Diamond Cutter
4	PIREM 4	Chucking Knob
5	PIREM 5	Wing Nut
6	PIREM 6	Spacing Adjusting Screw
7	PIREM 7	Pitch Center
8	PIREM 8	Tracing Stylus Shaft
9	PIREM 9	Stylus Arm
10	PIREM 10	Lever
11	PIREM 11	Engaging Lever
12	PIREM 12	Stopper
13	PIREM 13	Engraving Dial
14	PIREM 14	Tightening Knob

## IV.IMPORTANT NOTICE

---

- Do not use, store or expose the engraver in dusty and dirty areas. Its moving parts can be damaged.
- Do not attempt to open the engraver other than as instructed in this handbook.
- Do not use harsh chemicals, cleaning solvents, or strong detergents to clean the engraver.
- Do not paint the engraver. Paint can clog the moving parts and prevent proper operation.

If the engraver is not working properly, kindly contact Presidium Customer Service at [service@presidium.com.sg](mailto:service@presidium.com.sg) or:

Presidium Instruments Pte Ltd  
No. 6 Penjuru Lane  
Singapore 609187  
Singapore  
(65) 6379 5000  
Attn: Customer Service Executive

## 1. GETTING STARTED with your Presidium Inside Ring Engraving Machine - Mini

---

To prepare this machine for use, remove all packaging material and untie the wire that secures the Stylus Arm (9) to its catch.

### Changing the Engraving Dial

Pull and hold the Engaging Lever (12) to disengage the stopper (13) from the V-groove of the Engraving Dial (14).

Loosen the tightening knob (15) and change to the reverse side of the Engraving Dial. Retighten the Tightening Knob (15).

After changing the Engraving Dial (14), release the Engaging Lever (12) to allow the stopper (13) to engage the V-groove of the Engraving Dial.

### Setting up the Ring Holding

The self-centering chuck is the only workholding device. Each Self-centering Jaw (2) has a narrow and a wider groove, to hold narrow and wide rings respectively.

For desired ring holding setup, loosen all three Locknuts (1) and reverse the three Self-Centering Jaws according to the diagram below. Secure the ring firmly in the grooves of the three Self-Centering Jaws by turning the Chucking Knob (5) clockwise (**Fig. 1.1**).

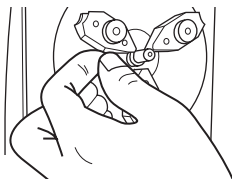


Fig. 1.1



## Adjusting the Letter Spacing

Letter spacing adjustment is done by loosening the Wingnut (6) and turning the Adjusting Screw (7). This adjustment can be set from 3 to 6 teeth movements.

Be sure to tighten the Wingnut in order to lock the Adjusting Screw together.

For a standard engraving, this machine is set to a minimum of 3 teeth movements.

## Indexing

In order to disengage the Stopper (13) from the V-groove of the Engraving Dial (14), lift the Lever (11) to its maximum, till spring resistance is felt, and hold it steady.

Push the Stylus Arm (9) back into its catch and manually rotate the Engraving Dial (**Fig. 1.2**).

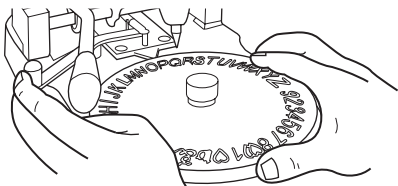


Fig. 1.2

Slowly release the Lever to activate pitching and to allow the stopper to engage any of desired template letter.

## 2. USING your Presidium Inside Ring Engraving Machine - Mini

The Tracing Stylus Shaft (10) is used to trace the template letters and the Engraving Diamond (4) to engrave letters onto the ring surface.

- Pull the Stylus Arm (9) out of its catch.
- With your right hand, depress the Tracing Stylus Shaft (10) against any desired template letter (**Fig. 2.1**).

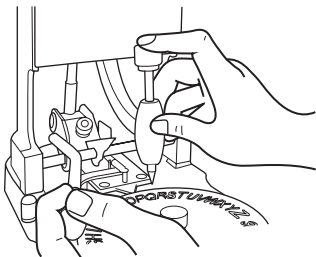


Fig. 2.1

- Push the Lever (11) down with your left hand to allow the Engraving Diamond to rest against the ring surface.
- With both Tracing Stylus Shaft and Lever depressed, proceed to engrave letter by letter.

Note: Very light pressure is required to trace with the stylus. More pressure is required for the lever.

### **3. TAKING CARE of your Presidium Inside Ring Engraving Machine - Mini**

---

- For accuracy of engraving, avoid shocks (such as dropping the instrument) or vibrations to the unit. Do not shake or cause impact to the unit.
- Do not attempt to dismantle the unit.

Your engraver is a product of extensive design and craftsmanship and should be treated with care.

Thank you for taking time to go through the user handbook which will enable you to understand your recent purchase better.

Presidium also recommends that you register your warranty by sending the warranty registration card to us or registering online at <http://www.presidium.com.sg/>

[www.presidium.com.sg](http://www.presidium.com.sg)

Copyright © 2015 Presidium Instruments Pte Ltd.  
All rights reserved.